

WEST PENN

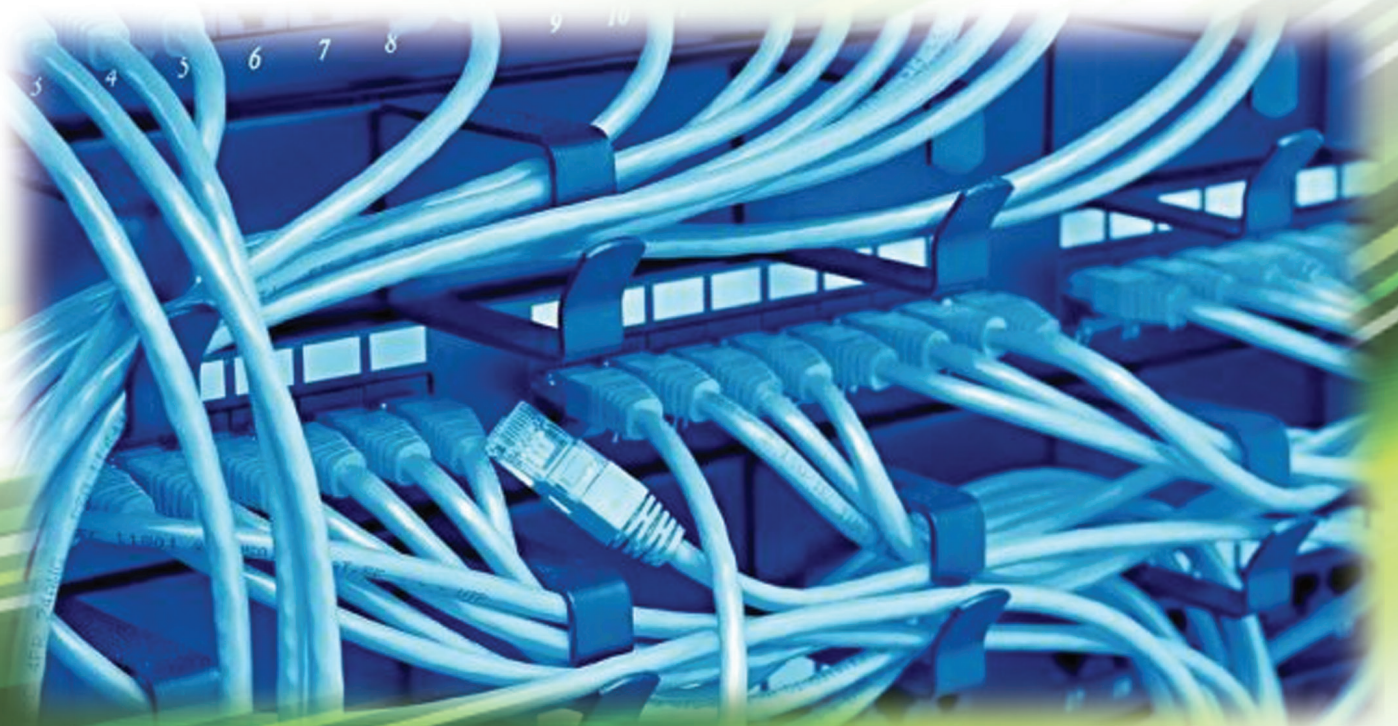
WIRE Since 1971

AV, SECURITY & NETWORKING SOLUTIONS

Product Guide

NEW

West Penn Wire Brand of Networking **Accessory Products**



RJ45 Jacks • Patch Panels • Patch/Cord Assemblies • Keystone-Style Wall Plates

The Brand You Trust for Cable

Now Has a Line of Networking Accessories

West Penn Wire is a manufacturer of high-end Category 5E, 6 and 6A UTP and F/UTP networking cable that provides performance, reliability, bandwidth and scalability in critical voice, data and video applications.

- > Data Centers
- > Local Area Networks
- > Building Management
- > A/V
- > Security and Alarm Systems

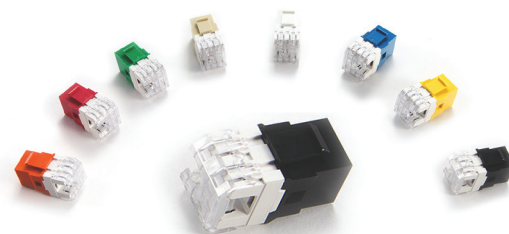
Now, West Penn Wire is offering our branded networking accessories for a complete West Penn Wire end-to-end solution. These highly engineered and tested products include: Category 5E/6 UTP and Category 6, and 6A F/UTP **RJ45 Jacks**, Category 5E/6 UTP and Category 6 and 6A F/UTP 24 & 48 **Port Patch Panels**, Category 5E/6 UTP **Assemblies**, and Keystone-Style **Wall Plates**, all backed by a **10-year standard warranty**.

Networking Cables and Accessories



Connectivity Accessories

CATEGORY 5E/6 UTP RJ45 JACKS	
Catalog No.	Description
RJ456U-C6C-cc	Cat6 Jack- cc: IV, WH, BK, BL, GY, GN, OR, RD, YE
KJWP-MTOOL	Multi-Pair Punchdown Tool



RJ456-C6C-cc

CATEGORY 5E/6 F/UTP RJ45 JACKS	
Catalog No.	Description
RJ456S-C6C-24	Category 6 Shielded Toolless Jack 24 Pack
CATEGORY 6A F/UTP RJ45 JACKS	
Catalog No.	Description
RJ456AS-C6A-24	Category 6A Shielded Toolless Jack 24 Pack



RJ456AS-C6A

CATEGORY 5E/6 UTP ASSEMBLIES		
Catalog No.	Description	
C6-CA1-cc-xx	Replace cc: BK, BL, GY	Replace xx: 3, 5, 7, 10, 15, 25 feet



C6-CA1-BL-xx

CATEGORY 5E/6 UTP PATCH PANELS	
Catalog No.	Description
24PP6C-L	24 Port Cat 6 UTP Patch Panel 1.75" - 1RU
48PP6C-L	48 Port Cat 6 UTP Patch Panel 3.50" - 2RU
CATEGORY 5E/6 F/UTP PATCH PANELS	
Catalog No.	Description
24PP6CS-L	24 Port Cat6 F/UTP Patch Panel 1.75" - 1RU
48PP6CS-L	48 Port Cat6 F/UTP Patch Panel 3.50" - 2RU
CATEGORY 6A F/UTP PATCH PANELS	
Catalog No.	Description
24PP6AS-L	24 Port Cat6A F/UTP Patch Panel 1.75" - 1RU
48PP6AS-L	48 Port Cat6A F/UTP Patch Panel 3.50" - 2RU



Patch Panels

KEYSTONE-STYLE WALL PLATES		
Catalog No.	Description	
SGKF-1-xx	1G Keystone Plate 1 Port	xx: Ivory IV or White WH
SGKF-2-xx	1G Keystone Plate 2 Port	xx: Ivory IV or White WH
SGKF-3-xx	1G Keystone Plate 3 Port	xx: Ivory IV or White WH
SGKF-4-xx	1G Keystone Plate 4 Port	xx: Ivory IV or White WH
DGKF-6-xx	2G Keystone Plate 6 Port	xx: Ivory IV or White WH
DGKF-12-xx	2G Keystone Plate 12 Port	xx: Ivory IV or White WH



Wall Plates

Your Very Best Source for Networking Cables and Accessories

West Penn Wire (WPW) designs and manufactures wires, cables, harnesses and related products and accessories for small, mid-size and Fortune 500 companies worldwide, as well as for audio, video, security and networking applications in these environments:

- > Corporate
- > Higher Education
- > Entertainment
- > Hospitality
- > Government
- > Houses of Worship
- > Healthcare
- > Retail

The company's engineering and manufacturing excellence enables customers to obtain solutions that meet the most demanding requirements for audio, video, security and networking applications.

To help meet customers' wire and cabling needs, WPW also offers value-added services, including:

- > Testing for Continuity & Workmanship
- > Custom Labeling (barcodes, logos, private labeling)
- > Special Packaging
- > Custom Kitting

With distribution centers located strategically throughout the country, WPW products can reach customers' places of business or jobsites quickly. WPW was established in 1971 and is based in Washington, PA, near Pittsburgh. It is part of the Belden group of companies (NYSE:BDC).



WEST PENN

WIRE Since 1971

AV, SECURITY & NETWORKING SOLUTIONS

800.245.4964 | sales@westpennwire.com | www.westpennwire.com